

Media valve with threaded seat – integrated needle valve

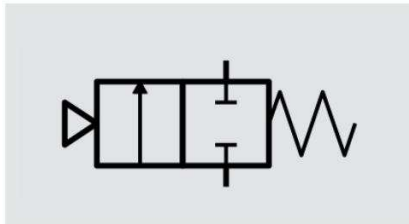
Pneumatically operated – chemical resistant

Article number: 500072

product similar



circuit symbol



Note:

The hermetic separation of the media circuit due to wear to the control air circuit is given by a separate ventilation space.
 The hermetic separation of the control air circuit due to wear to the media circuit is given by the same separate ventilation space.

APPLICATION

The media valve is a pneumatically operated 2/2-way valve to control liquid and gaseous media.

DIMENSION AND WEIGHT

Length (total)	37 mm
Diameter	26 mm
Weight	ca. 45 g

MATERIAL

Body material	stainless steel
Sealings	PeraSolv

OPERATING CHARACTERISTICS

max. media operation pressure	18,0 bar
Media temperature	room temperature
Media-PH-Value	neutral – pH7
min. control air pressure	4,5 bar
Control air characteristics	quality class 1 (particles), pressure dew point -4 °C, oil free, according to ISO 8573-1:2010

Working operations	up to 2 Mio., depending on application
---------------------------	--

HOME POSITION

Media passage closed – normally closed

CONNECTORS

Control air connector	quick connector for hoses OD 4 mm
Media connector	M16 x 1,5 outer thread; special seating
Wrench size	WAF 13

DESCRIPTION

- Usable for coating applications – free of free from substances interfering with wetting agents ("silicone-free")
- Media outlet connector rotatable by 360° for a flexible integration
- Mechanical switch indicator coupled to valve needle
- Fast change of the media valve without dedicated tools possible
- Applicable for continuously pumped media
- Applicable for water based and solvent based media as well as pressurized air
- FDA/BSE-TSE certification possible

ACCESSORIES

Available upon request